

3/32" med. hr.

1/16" 1/32" NW

1/16" 1/32"

3/4" dia
Bolt
1/16" thick

Wind
(mark = 2)

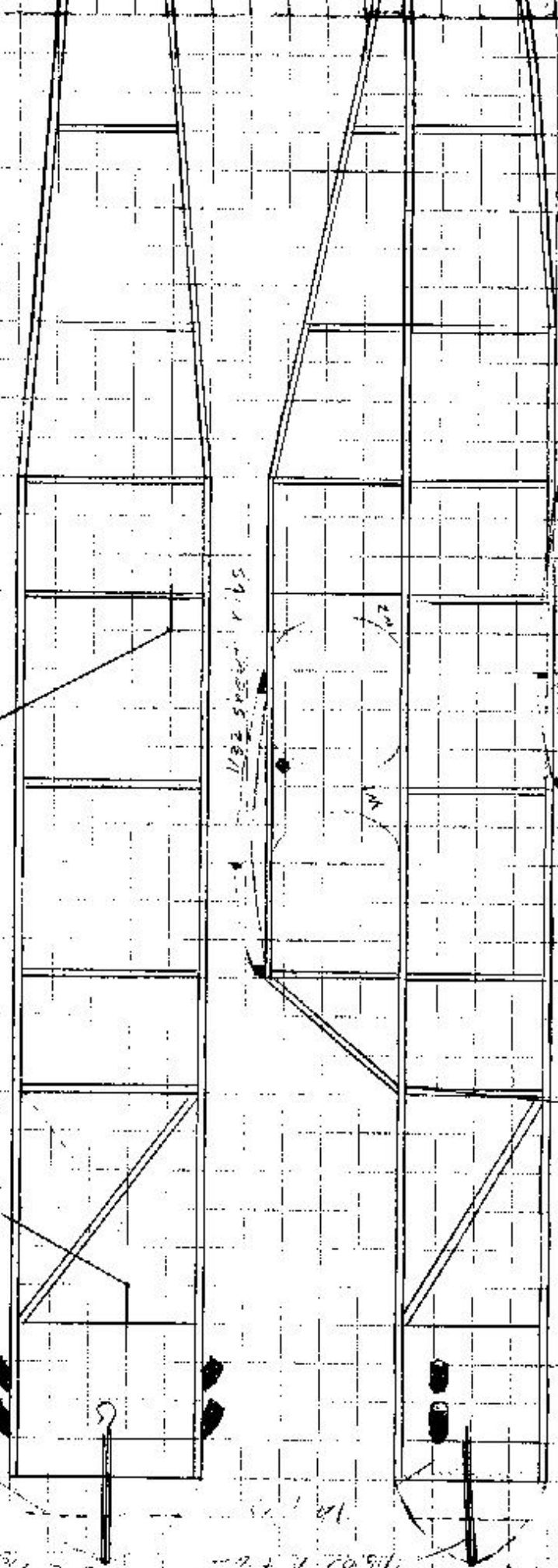
1/16" 1/32" medium

Use 7" peck pin and 18"-20" loop of 3/16" wire

Station w. regularly

All material 1/16" or 1/32"

1/16" 1/32"



1/16" 1/32"