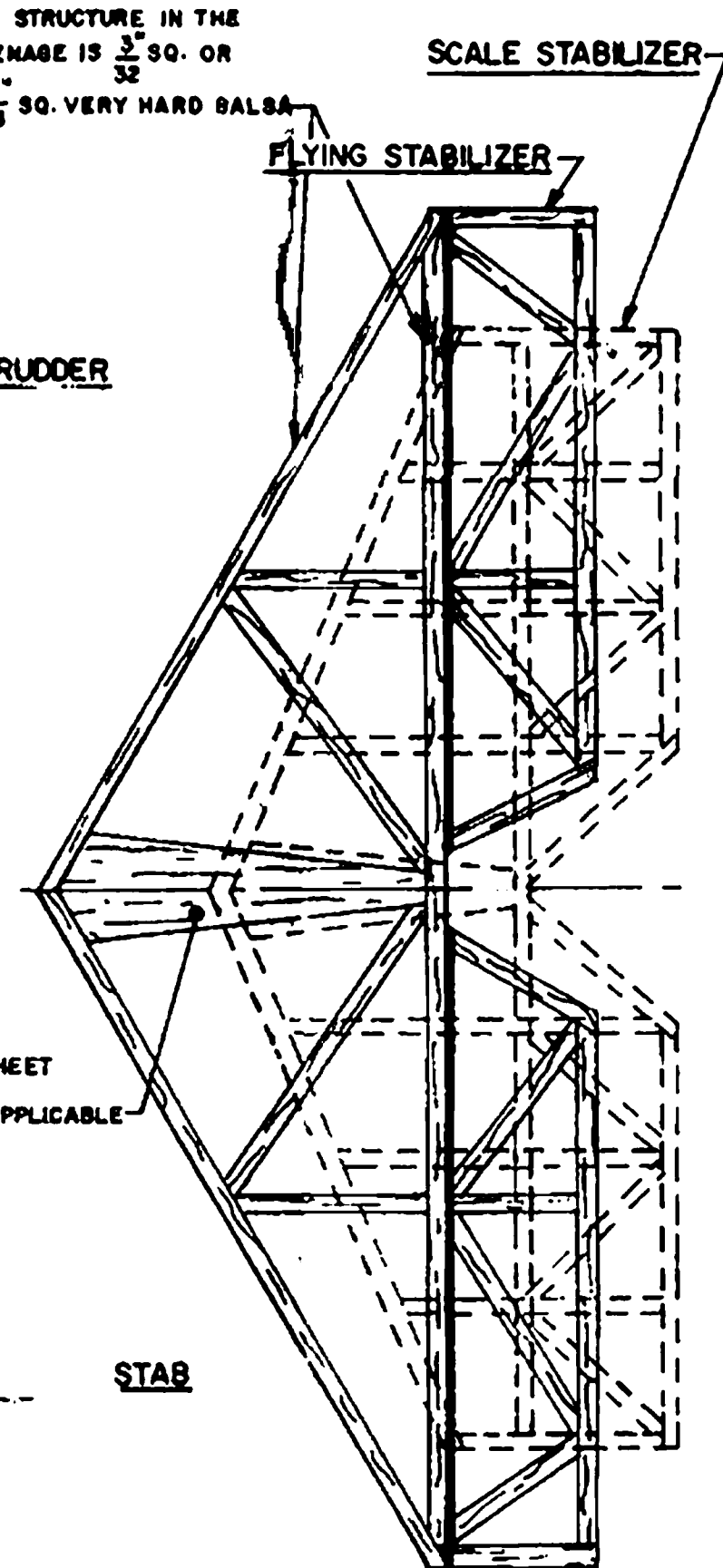
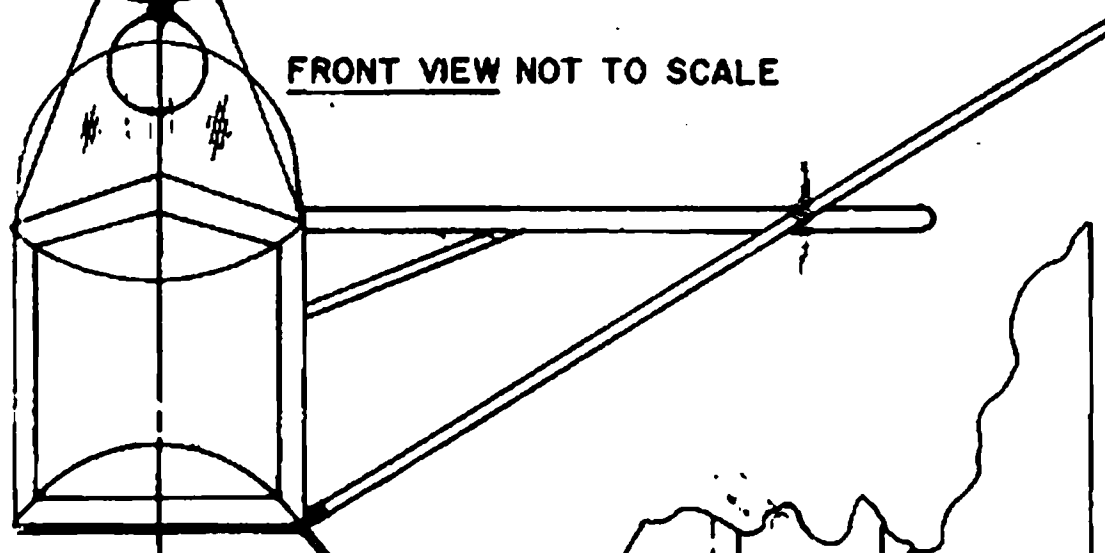
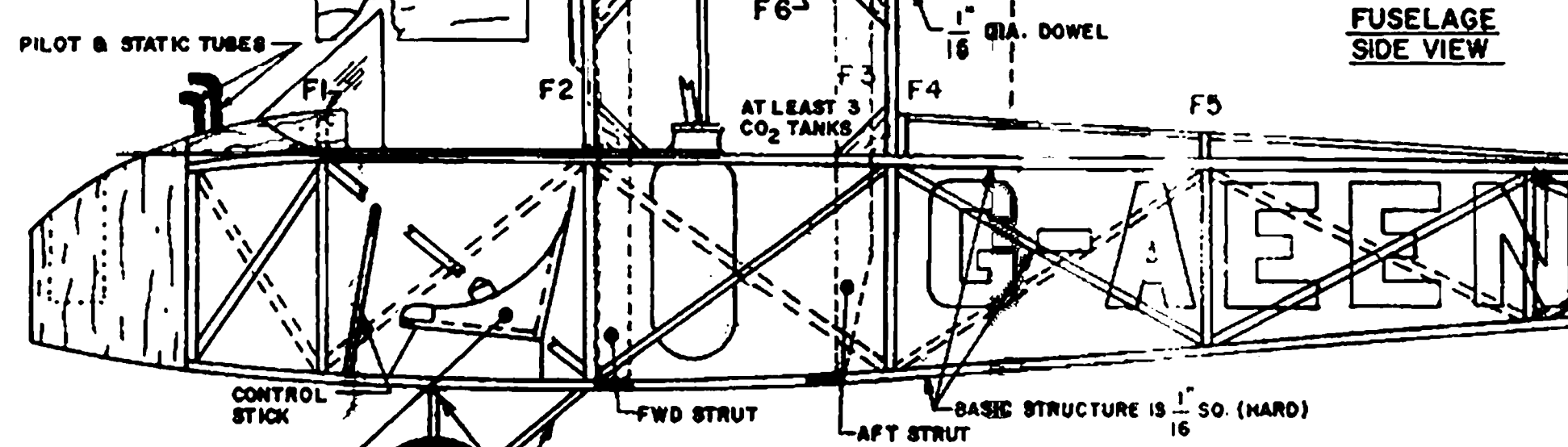
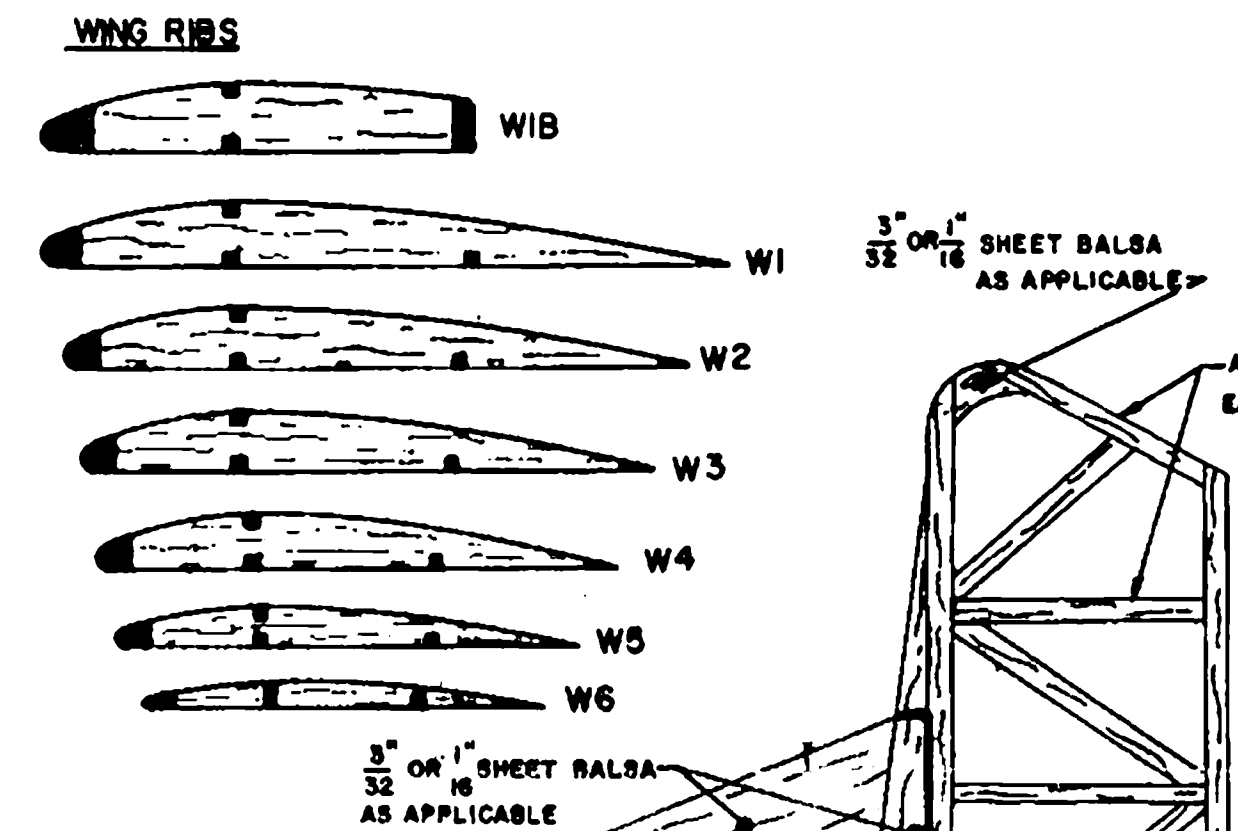
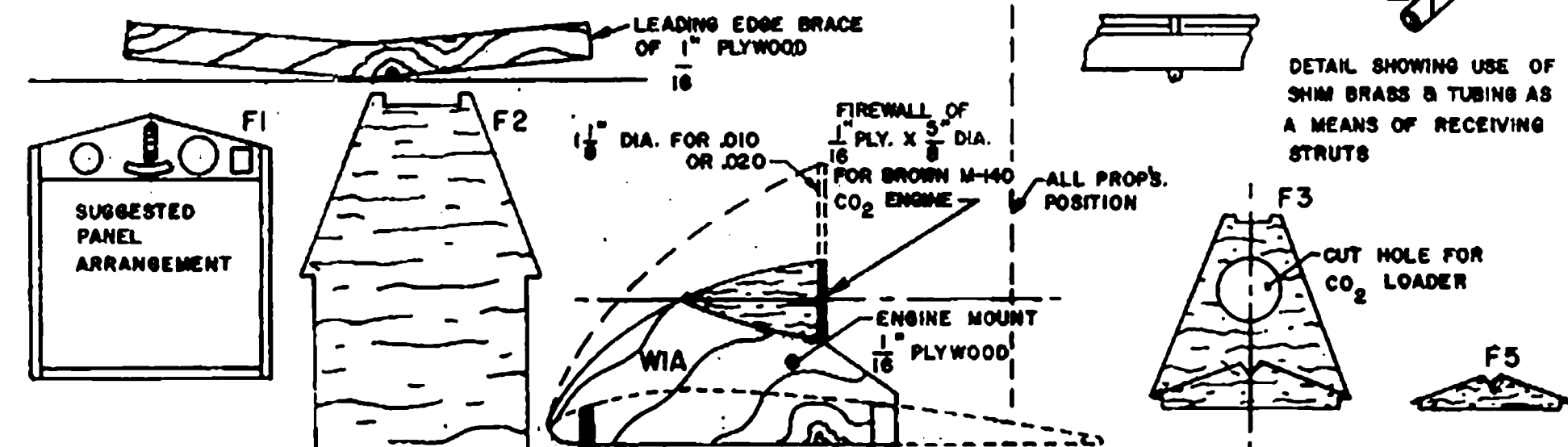


NOTE: DIHEDRAL BRACE TO GIVE 2° DIHEDRAL AT EACH TIP.

THE BAC DRONE (THE SAME BRITISH AIRCRAFT COMPANY OF TODAY) WAS AN EARLY ATTEMPT TO BUILD A TRAINER THAT WAS EASILY AFFORDABLE TO THE ASPIRING NOVICE BIROMAN. IT IS BASICALLY A 1932 VINTAGE SHIP OF WHICH NOT MUCH DATA IS AVAILABLE. SEVERAL PAGES OF EXCELLENT PHOTOGRAPHS ARE FOUND IN THE NOV. 1974 AEROPLANE MONTHLY, LONDON. THE PLAN WAS INSPIRED BY THE KIRBY CADET SAILPLANE PLAN OF MR. W. HANNAN AND SUBSEQUENT CORRESPONDENCE WITH THAT GENTLEMAN. POWER FOR THE DRONE WAS SUPPLIED (BEGRUDGINGLY) BY A 23 HP DOUGLAS SPRITE TWIN. TOP SPEED WAS 63 MPH. STALL SPEED WAS AT 28. THE CIVIL REGISTRATION OF THIS PLANE WAS G-AEJF. THE COLOR WAS EITHER NATURAL LINNEN, OR SILVER. THERE IS AMPLE ROOM FOR TWO CHANNEL CANNON R/C GEAR.



**B.A.C. DRONE**  
 DESIGNED BY—E. J. TONER JR.  
 DRAWN BY—BRUCE S. HANNAN  
 BUZZER MODEL AIRPLANE CO.